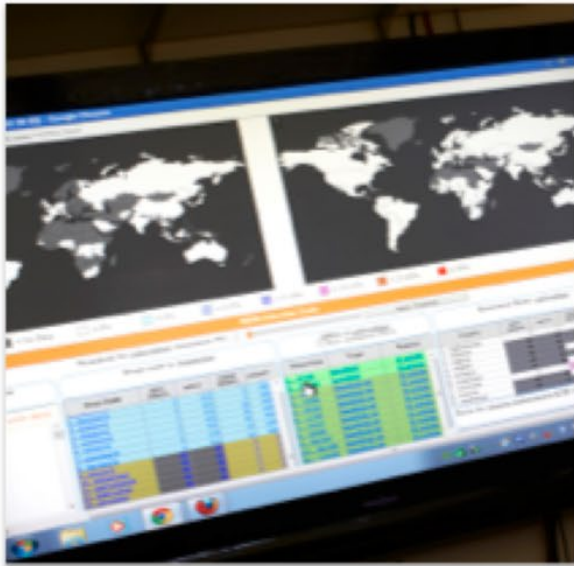


Nevada Institute of Personalized Medicine

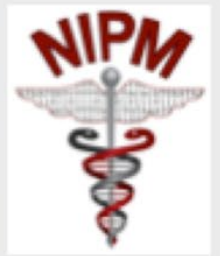
University of Nevada, Las Vegas
4505 S. Maryland Parkway, MS 4009
Las Vegas, NV 89154

Email: nipm@unlv.edu
[UNLV NIPM Website](#)

MISSION



UNLV



The Nevada Institute of Personalized Medicine (NIPM) at the University of Nevada, Las Vegas is working to improve individual and systemic healthcare through translational clinical scientific research, education and workforce training, commercialization of technologies, and job creation.

NIPM GOALS

The Nevada Institute of Personalized Medicine (NIPM) at UNLV is working to improve individual and community health in Nevada through research, education, workforce training, technology commercialization, and job creation.

Modern healthcare relies largely on an expensive “one-size-fits-most” model for diagnosis and treatment that often fails to account for biological differences between people. Personalized medicine is different. Your unique genetic makeup – your DNA – already encodes the blueprint for effective treatment and disease prevention.

NIPM will help move Nevada from the trial-and-error medicine of today to the data-driven decision-making of tomorrow by decoding the human genome to predict disease susceptibility, sift through treatment options, and fine-tune drug dosages to minimize adverse effects, and help Nevadans lead longer and healthier lives.

UNLV PARTNERS

- ❖ UNLV VPRED, Provost, President
- ❖ College of Sciences
- ❖ School of Integrated Health Sciences
- ❖ Kirk Kerkorian School of Medicine
- ❖ School of Life Sciences
- ❖ School of Community Health
- ❖ School of Nursing
- ❖ Department of Mathematical Sciences
- ❖ Department of Chemistry and Biochemistry
- ❖ Advisory Boards
- ❖ National Supercomputing Institute
- ❖ Office of Economic Development
- ❖ Cleveland Clinic Lou Ruvo Brain Center for Health

SUPPORT: NIH COBRE Grant

- On June 1, 2018, UNLV was awarded an \$11.4 Million Federal Grant to Advance Personalized Medicine in Nevada
- Funding from the National Institutes of Health will support human genetics research
- Will develop pipeline of scientists working to make Nevada a leader in personalized medicine
- Project Number: 5P20GM121325



SUPPORT: GOVERNOR'S KNOWLEDGE FUND



Nevada Governor's Office of
Economic Development
— Empowering Success —

NIPM is the first GOED-funded project to break even and become sustainable with non-state dollars!

TECHNOLOGY COMMERCIALIZATION

Technology Commercialization in Nevada

Knowledge Fund

Center for Gaming Innovation at the University of Nevada, Las Vegas

Institute for Quantitative Health Sciences at the University of Nevada, Las Vegas

Nevada Advanced Autonomous Systems Innovation Center at the University of Nevada, Reno

Applied Innovation Center for Advanced Analytics at the Desert Research Institute

Nevada Water Center of Excellence Knowledge Fund Proposal

NSHE-Industry Unmanned Autonomous Systems Collaboration Program

Battle Born Venture

Water Center of Excellence

Knowledge Fund

The Knowledge Fund is a \$10 million budget allocation intended to spur research, innovation and commercialization in Nevada. It was created in 2011 as part of Assembly Bill 499, and received funding during the 2013 legislative session. To obtain this funding, the Nevada System of Higher Education (NSHE) submits applications to GOED for projects that could benefit from Knowledge Fund support. GOED, together with the Knowledge Fund Advisory Council, selects the projects that are best suited for funding. In its first year, the Knowledge Fund has supported and established six new projects within NSHE.

Knowledge Fund Advisory Council

- Dr. Nancy E. Brune, Executive Director, Kenny Guinn Center for Policy Priorities
- Anthony Ciorciari, former Executive Vice President, IGT
- Steve Henry, Director for Global Security, NSTec
- Jason Mendenahll, Executive Vice President, Switch
- Billy P. Smith, consulting Principle Health Physicist, M.H. Crew & Associates
- Roger Wittenberg, Founder, Boulder Bay

Knowledge Fund Projects

- Center for Gaming Innovation at University of Nevada, Las Vegas
- Institute of Quantitative Health Sciences at the University of Nevada, Las Vegas
- Nevada Advanced Autonomous Systems Innovation Center at the University of Nevada, Reno
- Applied Innovation Center for Advanced Analytics at the Desert Research Institute

NIPM SYMPOSIUM SPONSORS



eppendorf



Nevada Governor's Office of
ECONOMIC DEVELOPMENT

SONY

NIPM - EXTERNAL ADVISORY BOARD



Hong-Wen Deng
PhD



Jerome Rotter
MD, PhD



Kenton Sanders
PhD



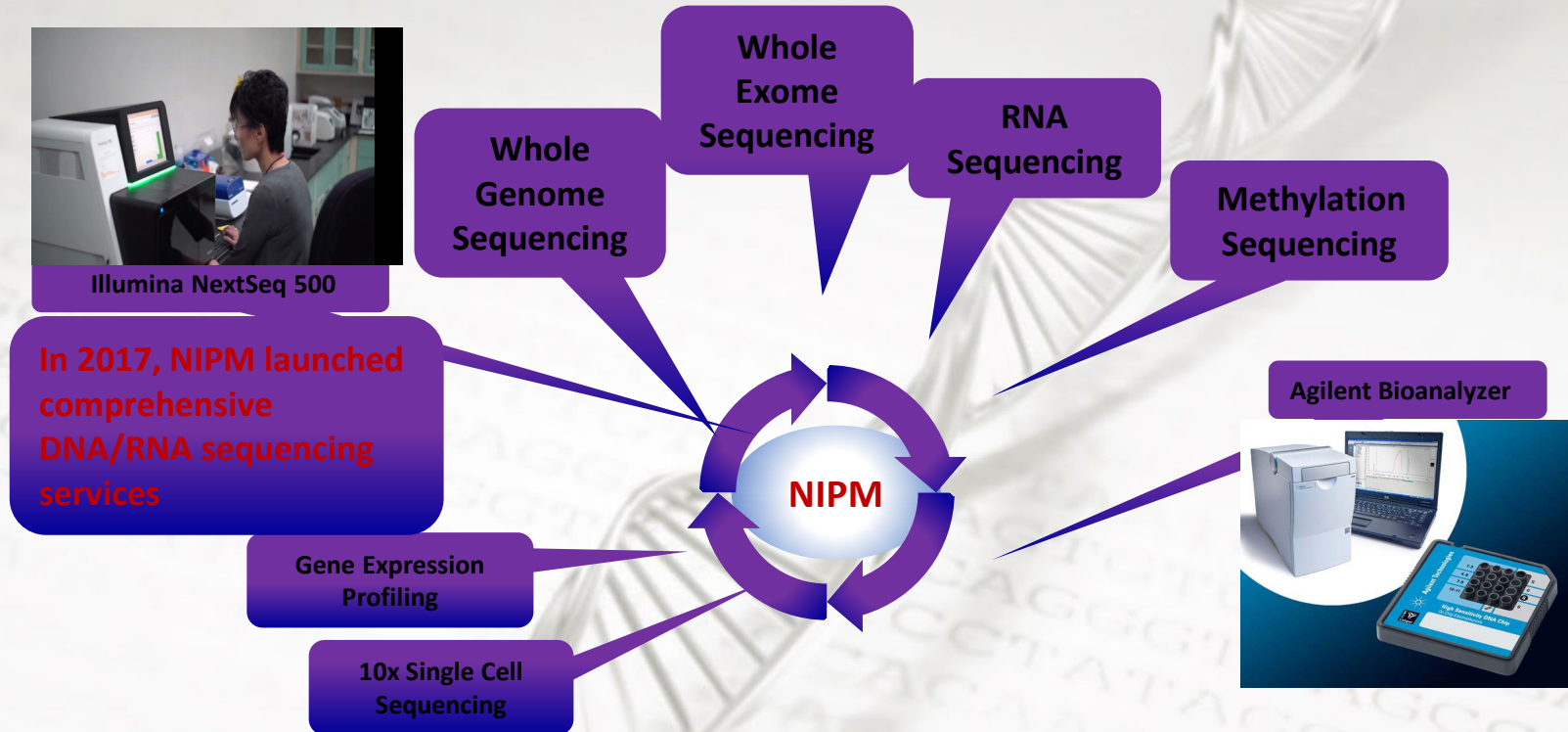
University of Nevada, Reno



Bill Shuttleworth
PhD



NIPM NGS AND GENOTYPING SERVICE



Services include QC checks, sample prep, and library prep. Grants are available.

Contact us for more details and a custom quote: shirley.shen@unlv.edu

<http://www.unlv.edu/nipm/ngs>

NIPM BIOINFORMATIC SERVICES



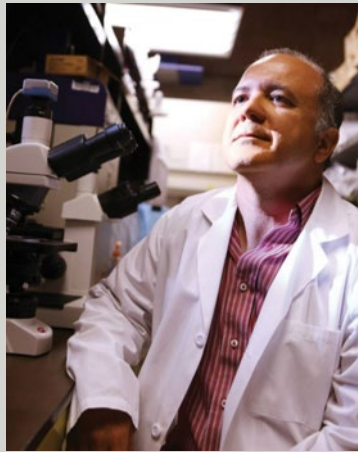
NIPM NGS and Genotyping Services are available at: <http://www.unlv.edu/nipm/ngs> Seed Grants are available for application at: <http://www.unlv.edu/nipm/grants>

UNLV

nipm@unlv.edu
www.unlv.edu/NIPM



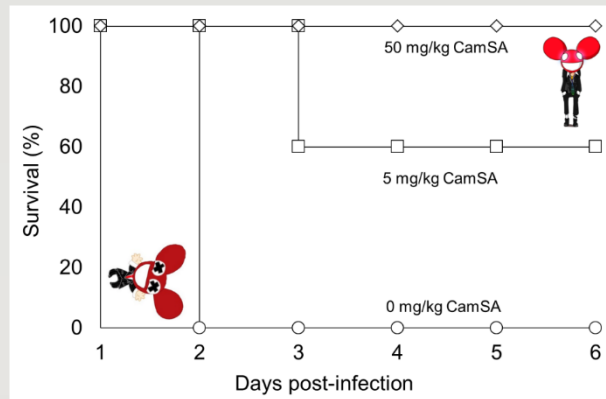
Ernesto Abel-Santos-Affiliate Faculty



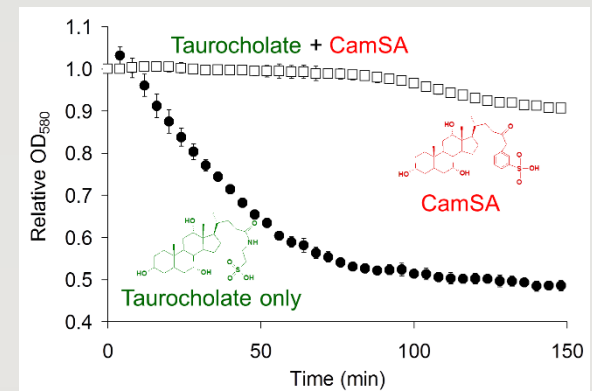
Professor
Chemistry and Biochemistry
ernesto.abelsantos@unlv.edu
702-895-2608
CHE 218B

The Abel-Santos Laboratory is working on a compound that could aid your intestinal tract when antibiotics have wiped out much of the “good” bacteria. This anti-germinant compound, known as CamSA, works by stopping the germination of *Clostridium difficile* (*C. diff*). While *C. diff* can be a normal component of bacteria in the human gut, it also can become a problem when competing bacteria are wiped out by antibiotics. That is particularly dangerous for patients with suppressed immune systems, many of whom have been in hospitals, nursing homes, surgery centers and other environments where *C. diff* thrives. This work has been patented.

CamSA protects mice from CDI



CamSA inhibits Cdiff spore germination



nipm@unlv.edu
www.unlv.edu/NIPM



Amei Amei - Affiliate Faculty



Development of novel methods in statistics and probability to address issues in genetics of complex diseases and evolution of biological species. Specifically,

- retrospective association testing methods for longitudinal outcomes which can be applied to longitudinal association analysis of cocaine use or cardiovascular diseases
- interaction effects of sets of genetic variants by environment using variance component association tests in generalized linear models
- quantitative methods for genetically informed biomedical research on complex diseases, especially on mental disorders such as schizophrenia, bipolar disorder and addiction

Associate Professor of
Statistics
Mathematical Sciences
amei.amei@unlv.edu
702-895-5159
SEB 3127

UNLV

nipm@unlv.edu
www.unlv.edu/NIPM



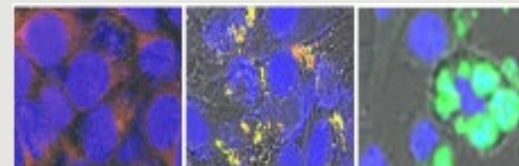
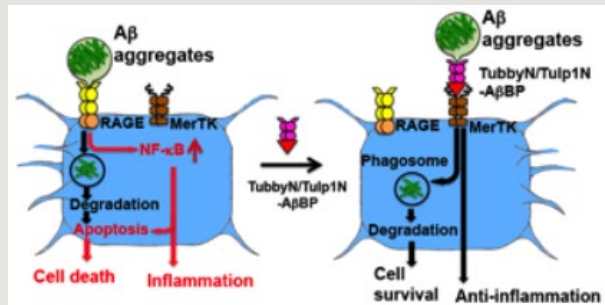
Nora Caberoy- Affiliate Faculty



Lincy Assistant Professor of
Life Sciences
School of Life Sciences
nora.caberoy@unlv.edu
702-774-1501
SEB 3170

Areas of Research:

- Retinal Degeneration
- Study the role of retinal pigment epithelium (RPE) cell phagocytosis in photoreceptor death that leads to retinal dysfunction
- Obesity
- Exploration of the physiological and pathological roles of tubby in the development of obesity. Multidisciplinary approaches including animal models, molecular, cellular, genetic, biochemical and functional proteomics by phage display in combination with next generation DNA sequencing (NGS) technology to investigate the above diseases.



UNLV

nipm@unlv.edu
www.unlv.edu/NIPM



Jingchun Chen – NIPM Faculty



Associate Professor,
Nevada Institute for
Personalized Medicine,
Interdisciplinary Program in
Neuroscience

jingchun.chen@unlv.edu

702-895-1196
HRC 182

Area of Research Interests:

- Artificial intelligence and deep machine learning modeling to classify complex diseases, such as Alzheimer's disease and psychiatric diseases (schizophrenia, bipolar disorder, major depressive disorder)
- Drug discovery for Alzheimer's disease using multi-omics data and networking
- Genetic correlation/association and causal effects between Alzheimer's disease and other diseases, such as COVID-19, gut microbiome, type II diabetes, and schizophrenia
- Molecular and cellular models to study the role of microglia in aging, neurodegenerative diseases, and Alzheimer's disease.

UNLV

nipm@unlv.edu
www.unlv.edu/NIPM



Shawn Gerstenberger- Affiliate Faculty



Research Interests:

- Childhood Lead Poisoning and Healthy Homes
- Asthma Triggers and Home Interventions
- Heavy Metal Contamination of food items: candy, hot sauce, fish, etc.
- Currently have several HUD, US FWS and Dignity Health Funded Projects
- Metals analysis, Lead and Mercury
- Portable XRF
- GC-MS
- AA
- Spectrophotometry
- Microwave Digestion

Dean,
School of Community
Health Sciences
and

Professor,
Environmental and
Occupational Health

shawn.gerstenberger@unlv.edu
702-895-1565
BHS 514

UNLV

nipm@unlv.edu
www.unlv.edu/NIPM

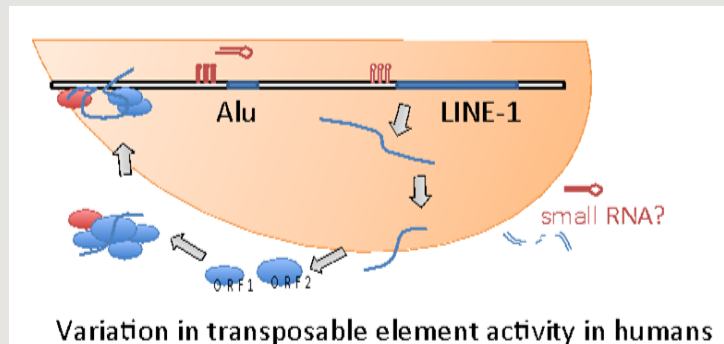


Mira Han - Affiliate Faculty



Assistant Professor
School of Life Sciences
mira.han@unlv.edu
702-774-1503
SEB 3178

- Evolution of genome structure using bioinformatics to investigate how genomes change through gene duplication, loss and gene transpositions.
- Phenotypic effects of Copy Number Variations (CNVs), indels and transposable element polymorphisms.



UNLV

nipm@unlv.edu
www.unlv.edu/NIPM



Brian Hedlund - Affiliate Faculty



- “Microbial dark matter”: Environmental genomics, systems biology, cultivation & systematics
- Ecology of thermophiles: Biogeochemical cycles & temperature-energy relationships
- Human microbiome: Effects of diet on gut microbial community composition, function, and role in *Clostridioides difficile* infection

Greg Fullmer Associate
Professor of Life Sciences
School of Life Sciences
brian.hedlund@unlv.edu
702-895-0809
WHI 101

UNLV

nipm@unlv.edu
www.unlv.edu/NIPM



Thessa Hilgenkamp – Affiliate Faculty



Areas of Research:

- Individuals with intellectual disabilities, Down syndrome and multiple sclerosis
- Physical activity and exercise
- Cardiovascular physiology
- Experimental to epidemiological research

Assistant Professor
Department of Physical
Therapy,
School of Integrated Health
Sciences, UNLV

Thessa.Hilgenkamp@unlv.edu

UNLV

nipm@unlv.edu
www.unlv.edu/NIPM



Jefferson Kinney - Affiliate Faculty



Associate Professor
Psychology
jefferson.kinney@unlv.edu
702-895-4766
CBC B426

Research interests:

- Alzheimer's disease-
 - We are currently investigating several candidate targets involved in the development and progression of Alzheimer's disease pathological features and behavioral impairments. These include genetic, immune, molecular, and cellular targets.
- Alterations in inhibitory signaling with relevance to schizophrenia-
 - We are investigating alterations in GABA signaling as it relates to behavioral, cellular, and protein level changes associated with schizophrenia.
- Neurobiology of Learning and Memory-
 - We are examining the role of GABA and glutamate signaling in learning and memory. These projects are directed at understand the interplay between excitation and inhibition in normal learning.

UNLV

nipm@unlv.edu
www.unlv.edu/NIPM



Hyunhwa Lee - Affiliate Faculty



Research interests:

- (a) early life adversity and its effect on adulthood mental health (e.g., depression, posttraumatic stress disorder [PTSD]) and disease progress for post-concussive syndrome (e.g., sports concussion)
- (b) the role of genetic factors and epigenetic regulation in these health outcomes, using improved methods for evaluating molecular-genetic mechanisms and immune system activation. Especially, the purpose of my project is to better understand the mechanisms involved in the development and perpetuation of persistent post-concussive syndrome, PTSD, and psychological resilience, as compared with traumatized controls without negative mental health outcomes.
- Board Certified Psychiatric and Mental Health Nurse Practitioner

Assistant Professor
School of Nursing
hyunhwa.lee@unlv.edu
702-8953492
BHS 448

UNLV

nipm@unlv.edu
www.unlv.edu/NIPM



Qian Liu – NIPM Faculty



Assistant Professor of
Bioinformatics

Nevada Institute of
Personalized Medicine

School of Life Sciences

Email: qian.liu@unlv.edu
Tel: 702-895-1187
Office: HRC 183G



Area of Research interests:

- Development of deep learning tools in computational biology
- Modification detection for both DNA and RNA on Nanopore sequencing
- 3rd generation long-read sequencing
- Identification of methylation biomarkers in neurological/autoimmune disorders
- Protein structural analysis

The UNLV logo, consisting of the letters 'UNLV' in a large, red, serif font.

nipm@unlv.edu
www.unlv.edu/NIPM



Joseph Lombardo - Affiliate Faculty



Executive Director, National
Supercomputing Center
(Cherry Creek)
Lombardo@nscee.edu
702-895-4153
SEB 1218

- Full-service supercomputing facility
- Mission for excellence in education and research in supercomputing and its applications
- Provides supercomputing training and services to academic and research institutions, government and private industry
- Supports medical informatics and health care
- Serves researchers at the University of Nevada Las Vegas and other statewide, nationwide and global research



+



UNLV

nipm@unlv.edu
www.unlv.edu/NIPM



Sarah Love - NIPM Staff



Program Coordinator, NIPM
sarah.love@unlv.edu

702-895-1297
WHI 117

- Day-to-day operations: budgets, events, human resources related functions, meetings, purchasing, reporting, scheduling, travel

Sarah Love is a true rebel as she received her degree in psychology in 2011 from UNLV and began working in the Student Affairs Division at UNLV in 2012. She later transitioned to the Nevada Institute of Personalized Medicine in 2017.

Sarah Love is the Program Coordinator for NIPM and assists the Executive Director with daily operations. She is experienced at managing complex accounts and confidential records, and comes to NIPM from the UNLV financial aids office.

UNLV

nipm@unlv.edu
www.unlv.edu/NIPM



Fatma Nasoz - Affiliate Faculty



Associate Professor of
Computer Science
Director of Data Science,
The Lincy Institute
fatma.nasoz@unlv.edu
702-895-0097
GUA 2119

- Machine learning: deep learning analysis of primary and secondary data across domains including health, education, finance, and genomics
- Data visualization: health, education, and social services data collection, visualization, and sharing
- Human-computer interaction: intelligent and adaptive user interfaces for e-learning, driving, and telemedicine

UNLV

nipm@unlv.edu
www.unlv.edu/NIPM



Edwin Oh – NIPM Faculty



Areas of interest:

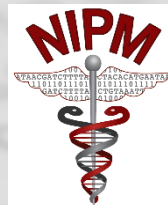
- Genomic interpretation
- Neurological genetic disease
- Ph.D. in Neuroscience, University of Michigan

Following his postdoc at Johns Hopkins University, Ed served as an Assistant Professor in the Department of Neurology at Duke University. The primary questions for his research program are 1) what are the genetic and structural variants that contribute to human health and disease, 2) how do we interpret such variation to improve the cellular and molecular diagnosis of genetic diseases, and 3) how do we enable the development of therapeutic paradigms. Ed is expert at a variety of molecular and genomic technologies, and animal modeling systems.

Associate Professor,
NIPM/School of Medicine
edwin.oh@unlv.edu
SEB 1176
Phone: (702) 895-0509

UNLV

nipm@unlv.edu
www.unlv.edu/NIPM



Jessica Paje – NIPM Staff



- Establishes and manages best practices for regular operation of the Institute
- Manages the pre- and post-activities for the COBRE grant

Jessica Paje joined NIPM in July 2020 as the Sr. Administrator. Her previous work experience was Program Manager at the John A. Burns School of Medicine, University of Hawaii at Manoa. For five years, she helped manage the IDeA Networks of Biomedical Research Excellence (INBRE), a federally funded grant sponsored by the National Institutes of Health (NIH) and National Institute of General Medical Sciences (NIGMS). Jessica earned her Master's in Public Administration from the University of Hawaii at Manoa in 2018.

Sr. Administrator
jessica.paje@unlv.edu
702-895-1297

WHI-117

UNLV

nipm@unlv.edu
www.unlv.edu/NIPM



Laurel A. Raftery - Affiliate Faculty

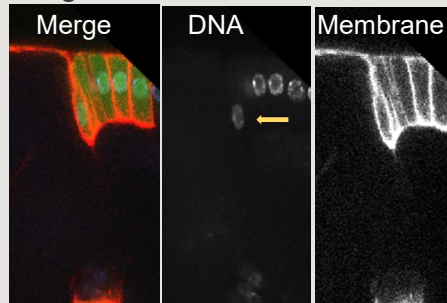


- The Raftery laboratory investigates how cells work together to build and maintain functional tissues.
- We use a model organism, *Drosophila*, for genome-wide functional screening and gene discovery.
- We study signaling networks involved in human cancer, fibrosis, hereditary hypertension, neuropathies, and bone growth.
- We study collective cell migration in epithelial morphogenesis to understand the regulation of epithelial cell motility in vivo.
- ~75% of known human disease genes have functional homologs

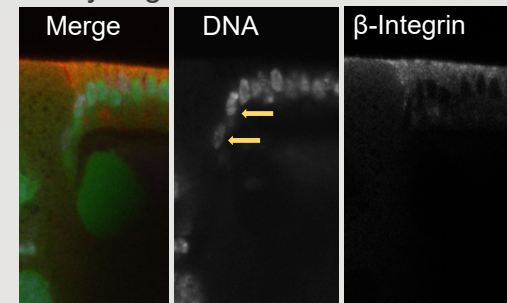
Professor
School of Life Sciences
Director
UNLV Confocal and Biological
Imaging Core
laurel.raftery@unlv.edu
702-774-1404
SEB 3174



Migration Onset



Early Migration



UNLV

nipm@unlv.edu
www.unlv.edu/NIPM

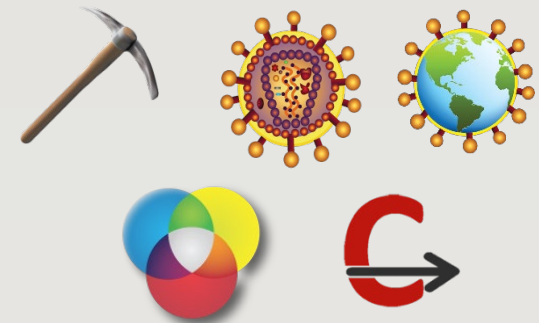
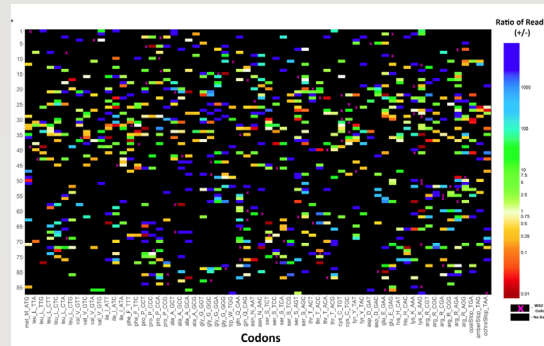


Martin R. Schiller – NIPM Director



- Minimotifs in proteins and human diversity
- HIV virology
- Bioinformatics software tools
- New biotechnologies
 - (gene editing for HIV, chimeric minimotif decoy screen, and GigaAssay)

Executive Director, NIPM
and
Professor, School of Life
Sciences
martin.schiller@unlv.edu
WHI 118



UNLV

nipm@unlv.edu
www.unlv.edu/NIPM



Jay Shen - Affiliate Faculty



Associate Dean, School of
Life Sciences
and
Professor, Healthcare
Administration & Policy
jay.shen@unlv.edu
702-895-5830
GTW 338

Research areas of focus and interest:

- Access to care and disparities in clinical outcomes/quality of care regarding race/ethnicity, uninsured and socioeconomically disadvantaged populations
- Health services research including comparative effectiveness research, effects of EHR adoption on health organizational performance, clinical outcomes and patient safety, care transition, palliative care and geriatric care, substance use and mental health, dental care access and costs
- Projects in Nevada
 - Factors associated with use of opioid, heroin, and cannabis among ED patients
 - Engaging patients with life-limiting illnesses on receiving palliative care
 - Engaging Asian communities in palliative care
 - Reduction in medication errors among hospitals
 - Economic effects of the smoking restriction law on healthcare
 - Diabetic complications and maternal outcomes

UNLV

nipm@unlv.edu
www.unlv.edu/NIPM



Shirley Shen – NIPM Staff



- Manages the NIPM Sequencing Lab day-to-day operations
- Ensures compliance with UNLV, state, and federal regulations
- Prepares and conducts training sessions for students and faculty.

Shirley joined UNLV in 2001 as a research associate in the department of mechanical engineering and has worked at the School of Medicine, Genomics Core Facility and School of Nursing in UNLV. She earned her Master of Science in medical studies from Nanjing Medical University in China and has earned awards for her work in research including the UNLV Merit Award for Outstanding Research Performance.

Laboratory Manager
shirley.shen@unlv.edu
702-895-4550
HRC 422

UNLV

nipm@unlv.edu
www.unlv.edu/NIPM



Richard Tillett – NIPM Staff



Bioinformaticist
richard.tillett@unlv.edu
702-895-1297

- Bioinformaticist, NIPM Genome Acquisition & Analysis Core
- With 16 years of experience in DNA sequencing, molecular biology, and bioinformatics, Dr. Tillett aims to support and advance genomic studies and projects through bioinformatic support and training. Dr. Tillett obtained his Ph.D. in Biochemistry from the University of Nevada Reno in 2011 and is the author of two recent studies on the genomic identities and spread of SARS-CoV-2 in the state of Nevada. Dr. Tillett is a Data Carpentry-certified Genomics Instructor and advocate for increasing bioinformatic skillsets in research and student communities.
- Dr. Tillett joins the GAA core to support life scientists in genomic study design, sequencing strategy, RNA-seq, genotyping and variant analyses, single-cell sequencing, genome assembly, and bioinformatics training and outreach.

UNLV

nipm@unlv.edu
www.unlv.edu/NIPM



Van Vo – NIPM Faculty



Assistant Research Professor
Nevada Institute of
Personalized Medicine,
College of Sciences, UNLV
van.vo@unlv.edu

Areas of Research:

- Effects of gene mutations on development
- Induced pluripotent stem cells (iPSCs) as a model system to explore human diseases
- Cancer drug development
- Wastewater surveillance of SARS-CoV-2 and other viruses

Qing Wu – Affiliate Faculty



Professor of Biomedical
Informatics
Ohio State University
Qing.wu@osumc.edu
614-688-9752

Area of Research interests:

- Development and validation of personalized clinical risk assessment
- Meta-analysis research
- Machine Learning and statistical modeling for precision prediction
- Bone density and osteoporosis research
- Statistical consulting in biomedical research

UNLV

nipm@unlv.edu
www.unlv.edu/NIPM



Hui Zhang - Affiliate Faculty



Associate Professor
Chemistry and Biochemistry
hui.zhang@unlv.edu
702-774-1489
SEB 4138

Research Interests:

-Biochemical and genetic control of embryonic, fetal, and adult stem cells in development and adult tissue renewal and regeneration through the coordinated regulation between stem cell specific transcriptional factors, epigenetic histone modification, chromatin remodeling, and DNA methylation.

-The cell cycle of embryonic stem cells and other related stem cells are unusual because many somatic cell cycle proteins, such as G1 or S cyclins, and tumor suppressor proteins, such as the retinoblastoma susceptibility gene encoded protein (Rb and Rb family proteins), are either not required or they do not exhibit cell-cycle dependent oscillation in these stem cells. Our ongoing research is trying to elucidate this unique stem cell replication/division mechanism.

-Development of synthetic lethal chemical inhibitors targeting the epigenetic vulnerability of human cancers.

This research not only try to answer the question why stem cells are so unique to maintain their pluripotency/multipotency and self-renewal potential to control the lineage-specific differentiation in development and tissue repair/regeneration, also helps to understand the underlying mechanisms of many human diseases such as cancers and developmental disorders in order to develop novel therapeutics.

UNLV

nipm@unlv.edu
www.unlv.edu/NIPM



NIPM Team paper in Today's Practice

Today's Practice | TECHNOLOGY

PERSONALIZED MEDICINE
IN THE ERA OF GENOMICS:

AN EXCITING TIME FOR TODAY'S PRACTICE

SPECIAL FEATURE: PERSONALIZED MEDICINE IN APPLICATION

BY MICHAEL A. NASIAK, XIANGNING CHEN, QING WU,
MIRA HAN, JUSTIN ZHAN, JINGCHUN CHEN,
JENICA L. ABRUDAN & MARTIN R. SCHILLER

Already, elements of genomics are being incorporated into standards of care, while continued consumer-driven marketing tactics have been successful in capturing the imagination of the public seeking its potential. Our patients have therefore become acutely aware that their health can be impacted in some positive way. With the nearly daily discoveries heralded in the news – and, at times, with concurrent and possibly misleading hype – of how the knowledge of applying genomics can counteract the afflictions endured by humanity, those seeking guidance will turn to us for clarifying how we can make a real difference in their well-being. Our duty must be ensuring we have a familiarity of the fundamentals concerning what Personalized Medicine can (and can't) promise, as the applications currently available are but a fraction of what is forthcoming.

“The genetic blueprint which makes us who we are is almost the exactly the same in all of us. However, our individual genomes contain over a million scattered variations, giving each of us our uniqueness not only in the specialness of our individuality, but also in our vulnerabilities.”

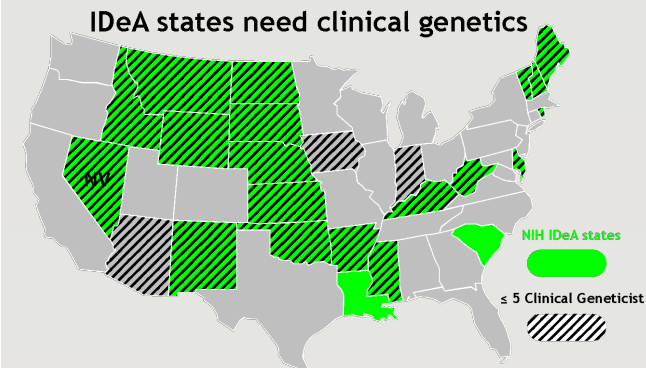


NIPM wins \$11.4M NIH COBRE award

This peer-reviewed center award has 45 UNLV and national contributing partners, and received support letter from 60 individuals and organizations

COBRE Component	Impact on Health
Overall (Scientific Premise summary)	Advance the use of genomics and genetics in personalized medicine through cutting-edge research discovery and use of genetic markers, building a center of excellence that fosters new investigator independence, and collaborating with the UNLV School of Medicine and other partners in basic and translational research
GAA core	Build computational and genomics research capacity, providing expert analysts to enable population-level genomics research for COBRE researchers, for scientists at UNLV, and for the IDeA network
Research project 1	Develop a new method using multi-omics profiling to identify the tissue of origin for cancers of unknown primaries to increase the accuracy of diagnosis and treatment
Research project 2	Increase the accuracy of osteoporosis diagnosis by using individualized clinical reference ranges based on individual genetic makeup and environment
Research project 3	Understand the functional role of microglia and immune system dysfunction in schizophrenia etiology to help identify new genetic markers for subtyping schizophrenia and to develop new therapeutic strategies
Research project 4	The role of engineered hybrid proteins in the clearance of the most toxic form of amyloid beta, and to test their potential as therapeutics to prevent the progression of Alzheimer's disease in an animal model.
Research project 5	Use advanced deep learning to identify various base modifications in DNA and RNA via Nanopore sequencing, and dissect methylation biomarkers in neurological diseases
Research project 6	The causative role of IMPK in intestinal carcinoids

COBRE=Centers of Biomedical Research Excellence; GAA=Genome Acquisition and Analysis; IDeA=Institutional Development Award; UNLV=University of Nevada, Las Vegas



UNLV

NIH grant number: P20 GM121325

nipm@unlv.edu
 www.unlv.edu/NIPM



SUGGESTIONS? WANT TO PARTICIPATE?

Would you like to:

- ❖ Receive clinical genetics healthcare
- ❖ Have your genome sequenced and analyzed
- ❖ Partner with NIPM on a project
- ❖ Commercialize a NIPM technology
- ❖ Discuss Personalized Medicine
- ❖ Have a NIPM faculty teach a class or give a seminar
- ❖ Donate to NIPM

Contact email: nipm@unlv.edu

VCS-OncoCycle startup from NIPM

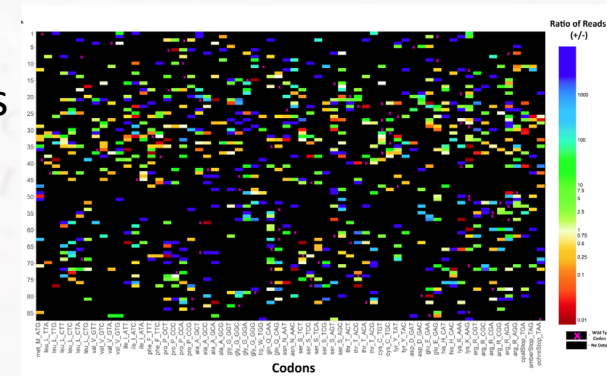
VCS-OncoCycle

Enabling personalized medicine™



Our company has invented a new single-cell screening technology called the GigaAssay (patent pending) that can rapidly identify the pathogenic potential of **all** mutants in any gene. This company will produce and monetize gene maps for cancer genes that control cell division with several healthcare applications:

- e-commerce sales of personalized genetic reports to patients
- licensing to diagnostic testing companies,
- licensing to drug development companies
- licensing to carrier screening companies



Food Genes and Me startup from NIPM

Food Genes and Me, LLC



Food Genes and Me is the first technology spinoff company from UNLV with angel investment funding. The company's mission is to recommend foods and supplements based on the highest quality-nutrigenetic studies available

FOOD GENES AND ME How It Works Who We Are Contact Us [Stay Up to Date](#) [Sign In](#)

Discover the foods that suit your DNA

Join our pre-release beta and receive free nutritional guidelines based on your genes

Everyone knows that your daily diet directly affects your health. What many don't know is that the relationship between your DNA and your diet can significantly impact your risk for specific health conditions.

We now know that "one-size fits all" diets are irrelevant, because on a genetic level, our body's needs are quite different. Our technology precisely hones in on those differences and is able to customize the perfect nutritional guidelines based on one thing—you.

[Join our Beta](#)

Not ready? [Join our mailing list](#) for now.

www.foodgenesandme.com