

# College of Sciences – 50years



**1968-2018**

# In the Beginning

1950s: University offered science and mathematics classes

1966: Division of Sciences and Mathematics established

1967: School of Sciences and Mathematics established

1968: College of Sciences and Mathematics established

1969: Robert B. Smith serves as founding dean of the College

1969: 500 undergraduate students; 41 graduate students; 39 faculty

Five core areas: biological sciences; chemistry, geoscience;  
mathematics; physics (and astronomy)

# College Deans

Robert B. Smith 1968-1981

David Emerson 1981-1989

Ernest Peck 1989-1995

Warren Burrgren 1995-1997

Raymond Alden 1997-2000

Peter Starkweather 2000-2001

Fred Bachhuber 2001-2003

Ronald Yasbin 2003-2008

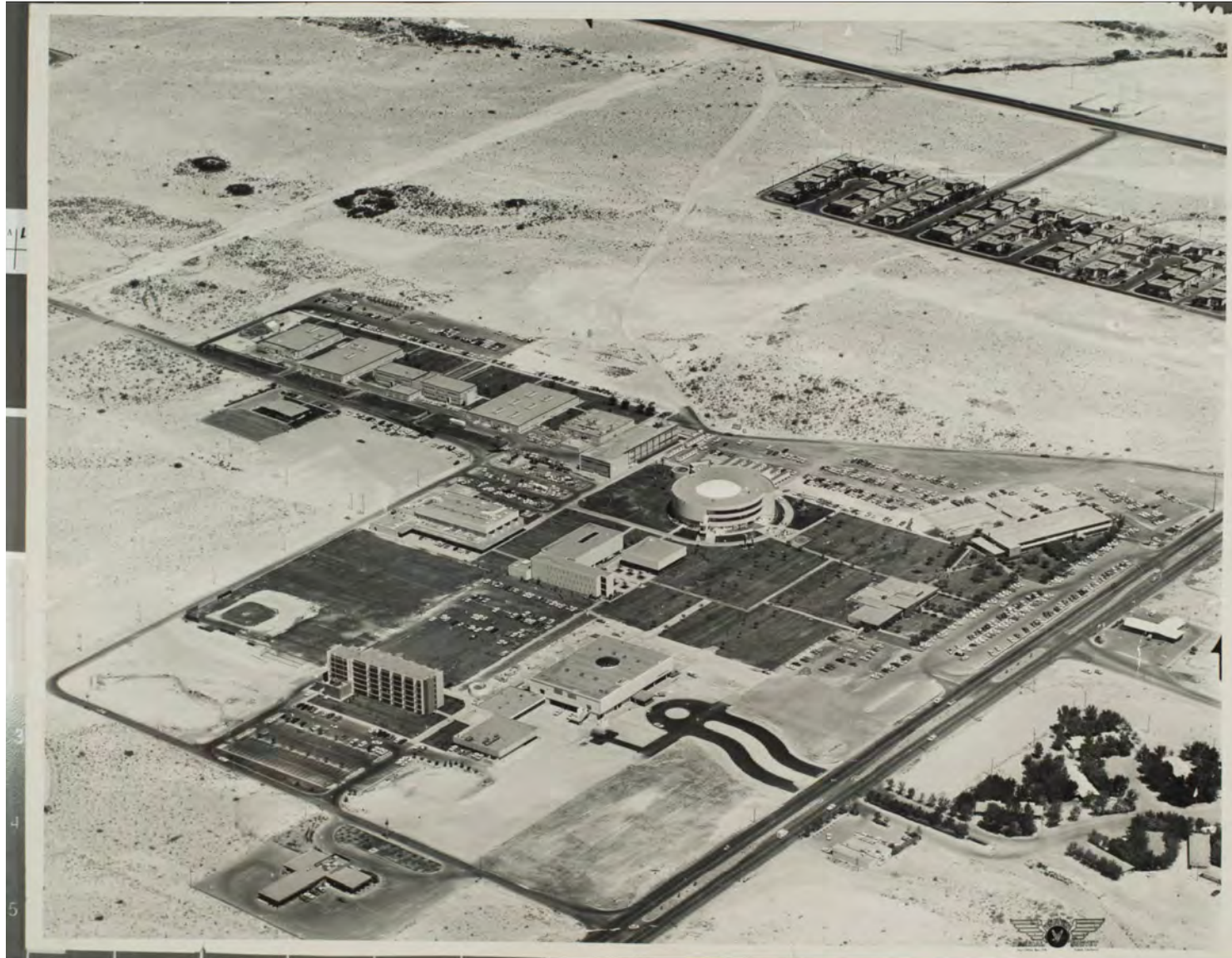
Wanda Taylor 2008-2010

Timothy Porter 2010-2016

Stanley Smith 2016-2017

Eric L. Chronister 2017-present

# Aerial view of campus, 1968



# Founding Dean and Mathematics Professor Robert B. Smith

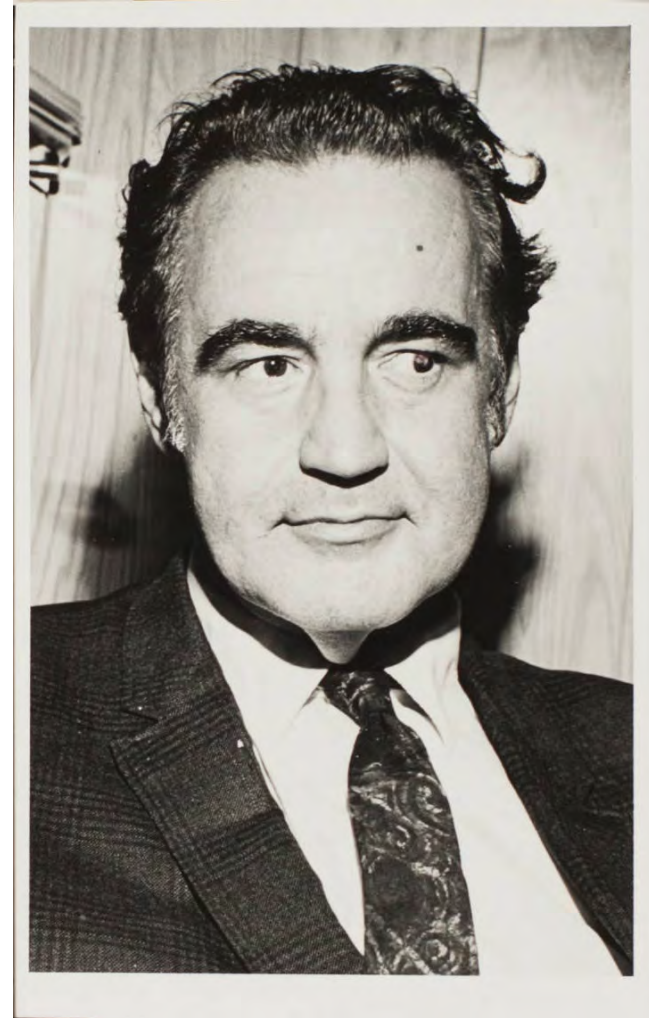




# Early Biology Professors



**Dave Turner, 1968**



**Raymond James Hock, circa 1960s**

# Early Mathematics Professors



**Lewis Siminoff, 1968**



**Chester Lankaer, 1969**

# Lilly Fong Geoscience Building, early 1970s





# Biology and Physics Labs



**Biology Lab, 1971**



**Astronomy Professor  
Barney Krinski, 1972**

# Biology and Chemistry Instructional Labs



**Biology Lab, 1973**

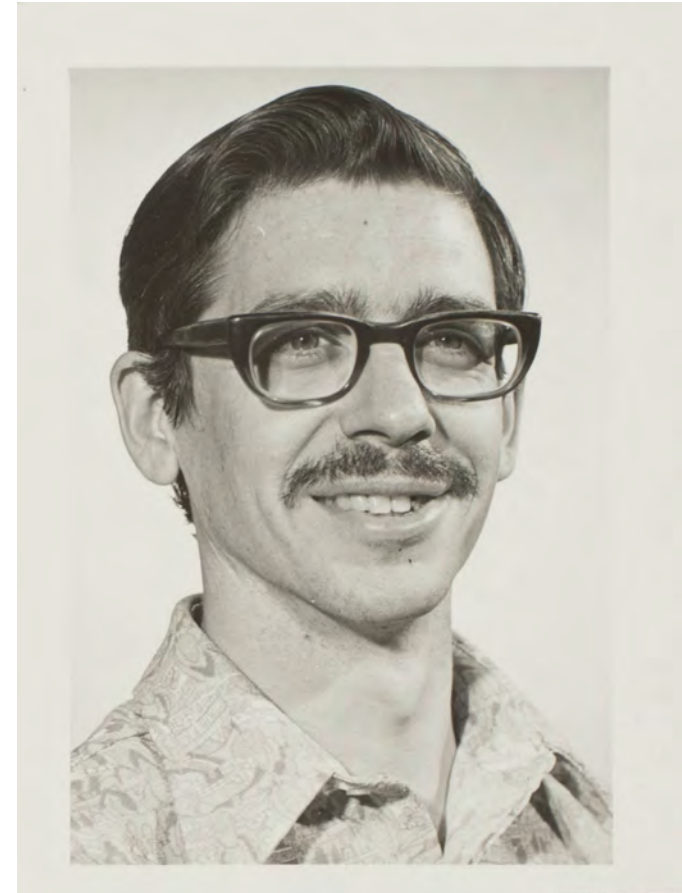


**Chemistry Lab, 1973**

# Early Physics Professors



**Friedwardt Winterberg, 1969**



**David Bennum, 1973**



# Chemistry Building, 1973





# Biology Research at Lake Mead, 1974



# Aerial view of campus, 1975



# Mathematics Conference, 1975





# Juanita Greer White Life Sciences Building



**Groundbreaking, 1975**



**Construction, 1976**



# Chemistry and Physics Research



**Presentation by Hewlett  
Packard to Physics, 1975**



**Chemistry lab, circa 1970s**

# Juanita Greer White Life Sciences Building, 1976

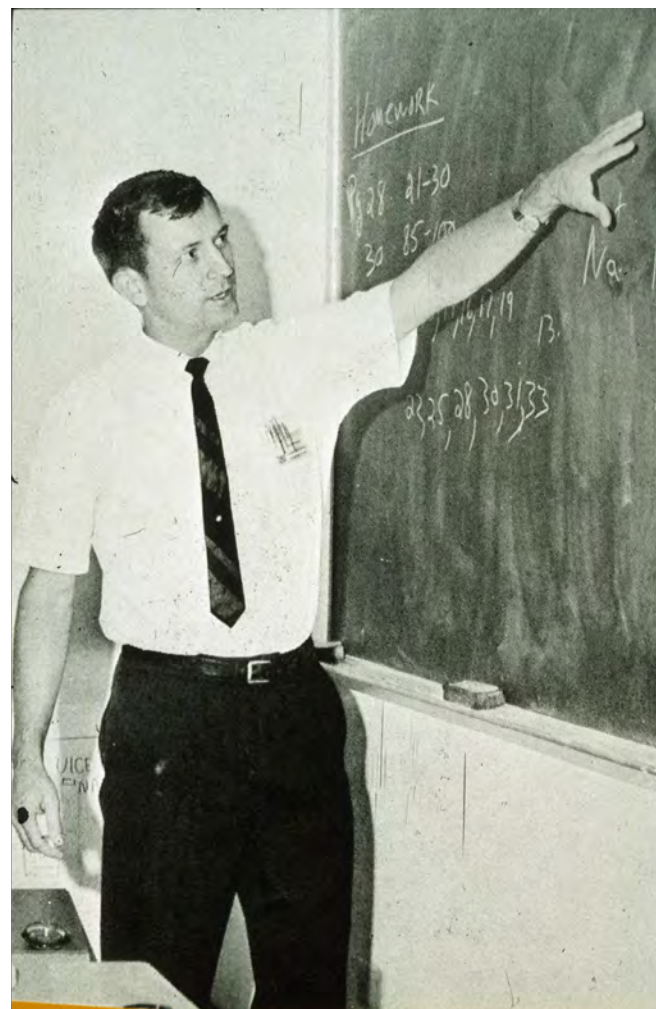




# Chemistry Research and Instruction



**Outstanding Chemistry  
Seniors, 1976**



**Chemistry Professor  
Stanley Grenda, 1978**

# Biology Instruction and Research



**Biology Class, 1977**



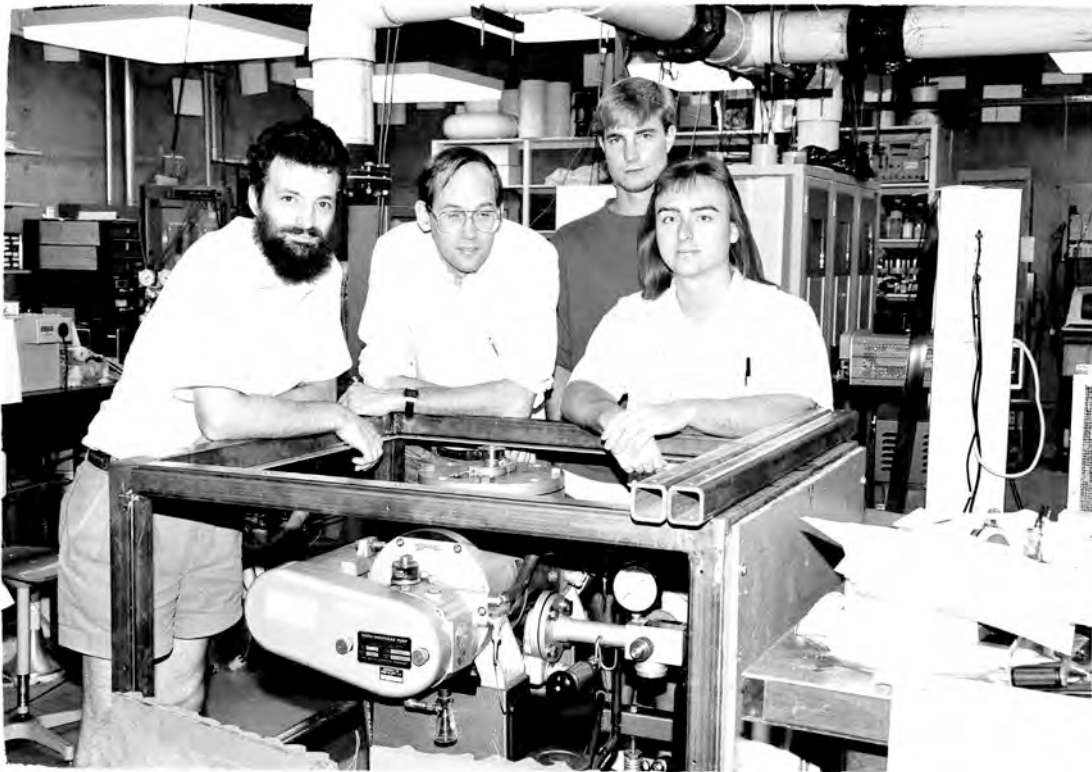
**Biology Professor Bruce Dill, 1979**



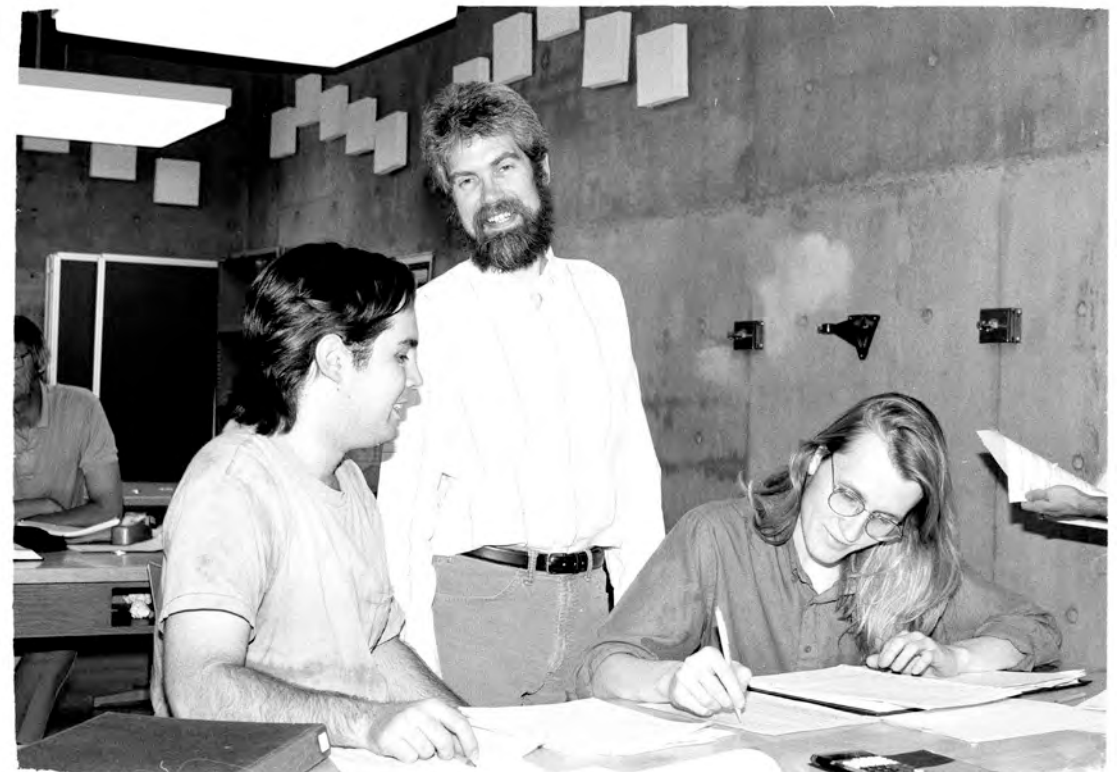
# Science Day, 1987



# Research and Instruction



**Chemistry Lab, 1990**



**Physics Professor Paul Hinzten, 1990**

**1991:**

The College of Sciences and  
Mathematics has 800 students  
and 82 faculty members



# Robert L. Bigelow Physics Building

The 70,000 square foot building was completed in 1994 and cost \$11 million. A glass wall facing the courtyard offers both filtered daylight and an homage to a sine wave. An apple tree pays tribute to Newton's theory of gravity while the roofline over the labs mimics the Quonset huts in which the developers of the atomic bomb worked during World War II. The light spectrum is represented in colorful banners hanging inside and the Big Bang theory in the concentric circles radiating out from where the building's two wings meet.

# View of Robert L. Bigelow Physics Building



# Aerial view of campus, 1997





**Spring 1997:**

The College of Sciences and  
Mathematics becomes the  
College of Sciences

# Science and Engineering Building: Construction completed in 2009





# Researchers





# Biology Research





# Biology Instructional Labs





# Chemistry Research

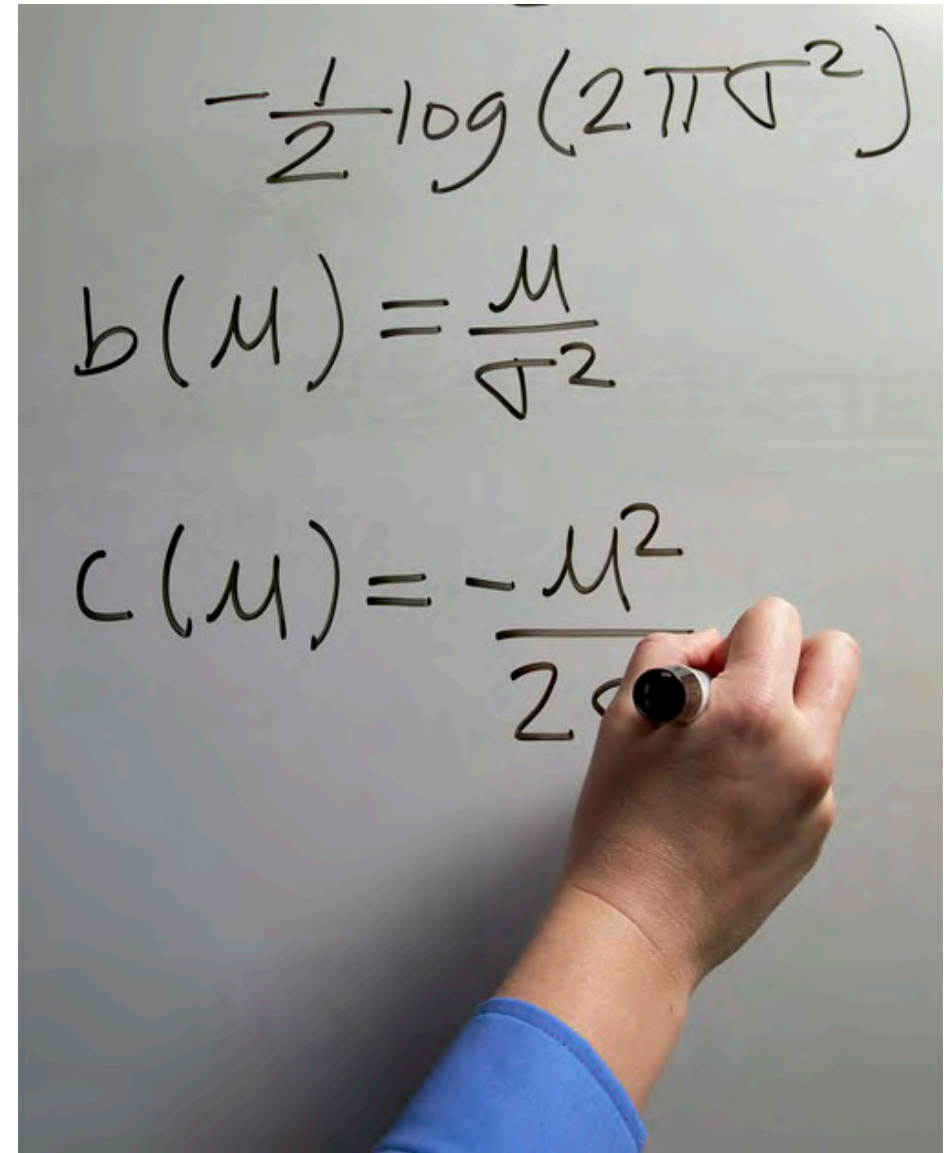




# Physics and Chemistry Research

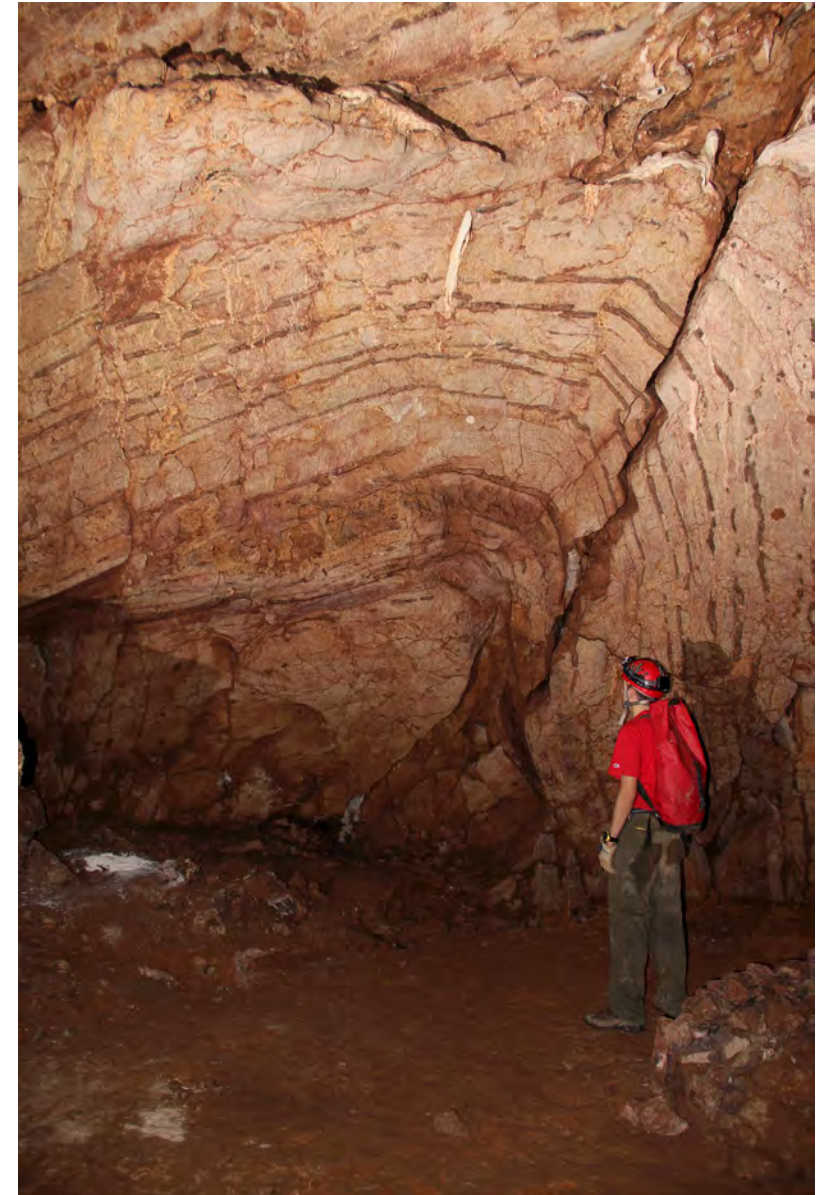


# Math Research Poster Session



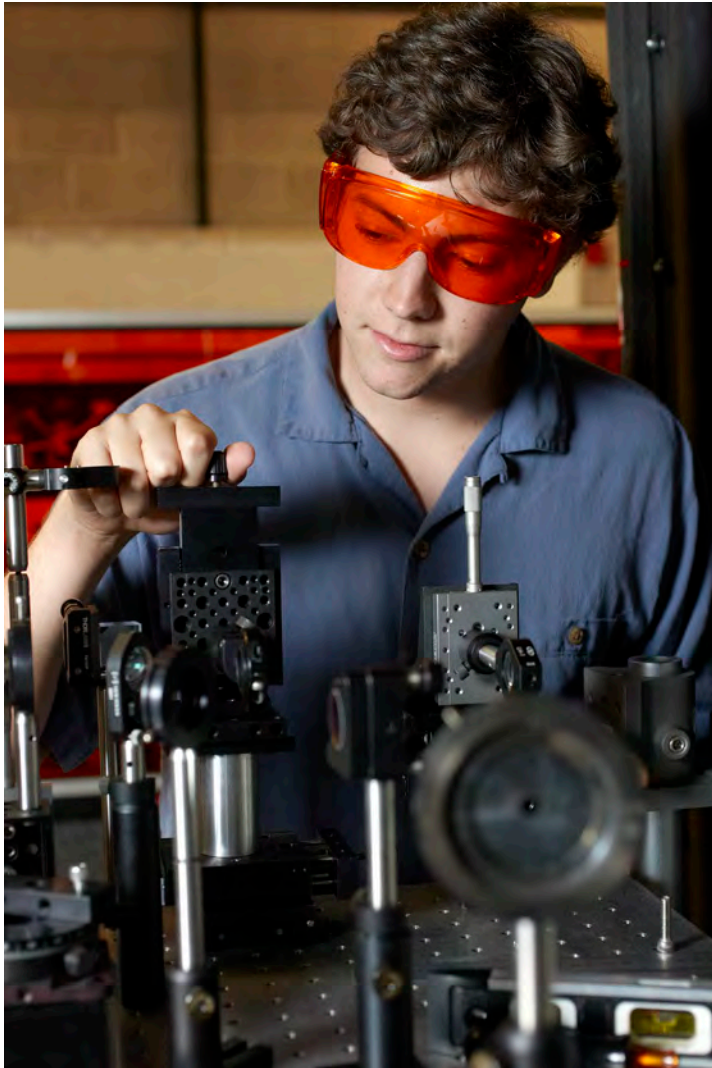


# Geology Cave Field Work





# Research Equipment





# Geoscience Field Work



# **Fall 2018 Enrollments**

**2,500 undergraduate students**

**250 graduate students**



UNLV College of Sciences

UNLV | COLLEGE OF  
SCIENCES